

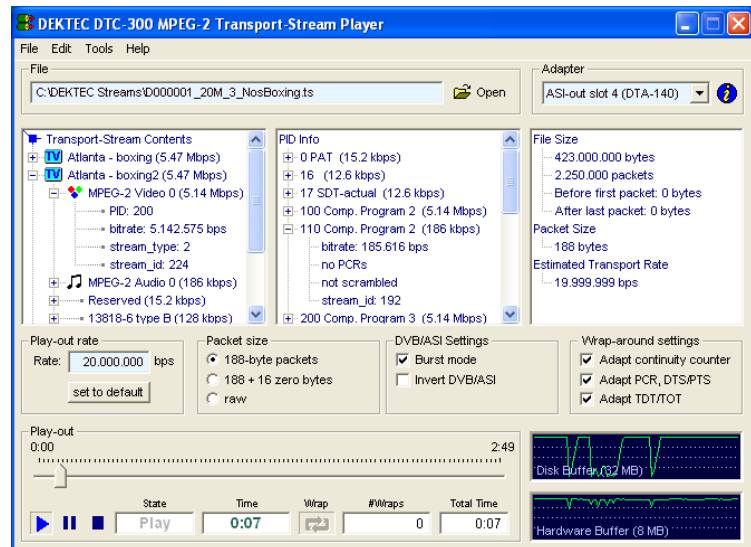


Transport-Stream Player Software

- Integrated (P)SI Viewer, Looping
- Null-packet Stuffing with PCR Correction
- Selective Error Injection

FEATURES

- Integrate yourself a low-cost, high-performance MPEG-2 stream player using a standard- or industrial PC, a DekTec output adapter (see list at bottom right) and the DTC-300 player software
- Integrated (P)SI viewer
- Automatic computation of transport rate from PCRs in the transport stream
- Play-out at a higher rate by null-packet stuffing with PCR correction
- Endless play (looping) with optional automatic correction of continuity-counter and PCR/PTS/DTS fields
- Support for sub-loops
- Reproducible injection of errors in the transport stream with adjustable error rate
- Selectable packet size, burst mode and inverted ASI settings
- Target-adaptor status indicator (DTA-102)



APPLICATIONS

- Universal MPEG-2 stream generator for feeding set-top boxes, digital-video processing equipment, etc.
- Deming your MPEG-2 equipment
- Laboratory MPEG-2 test-signal generator

KEY ATTRIBUTES

Transmit Rate for Device	Value
DTA-100	0...150 Mbit/s
DTA-102	0...108 Mbit/s
DTA-107	0...72 Mbit/s
DTA-110	0...52 Mbit/s
DTA-140, DTU-205	0...214 Mbit/s
Transmit Rate Granularity	< 1 bit/s

MINIMUM PC REQUIREMENTS

Platform	Windows-2000 / XP / 2003
Processor	PIII 300 MHz
RAM	256 MB
Disk	7200 rpm (rate ≤ 150 Mbit/s) 15000 rpm (rate > 150 Mbit/s)

RELATED PRODUCTS

Type	Description
DTA-100	DVB-ASI Output Adapter (PCI)
DTA-102	DVB-SPI LVDS Output Adapter (PCI)
DTA-107	QPSK Modulator/Upconverter (PCI)
DTA-110	QAM Modulator/Upconverter (PCI)
DTA-140	DVB-ASI In+Out Adapter (PCI)
DTU-205	FantASI USB-2 ASI/SDI Output
DTC-320	StreamXpert™ Analyser Software
DTC-330	DtTV™ Television Software

ORDERING INFORMATION

Type	Description
DTC-300	StreamXpress MPEG-2 Player

Please refer to www.dektec.com for the latest pricing and a list of distributors and resellers.